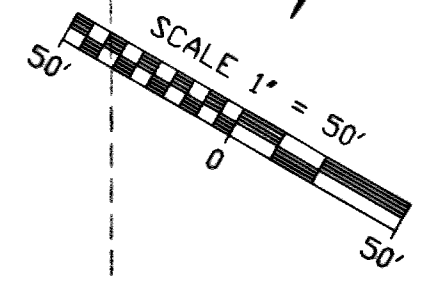
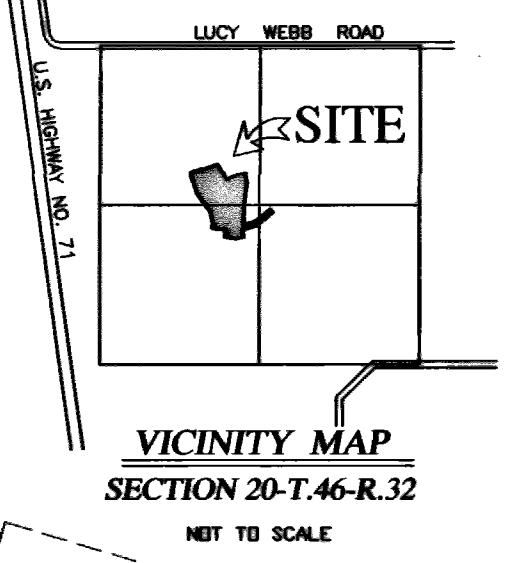


ELEV = 989
100 YR FLOOD ELEV.
(SEE NOTE 6 ON PAGE 1)

APPROXIMATE
100 YEAR
FLOOD PLAIN
(SEE NOTE 6 ON PAGE 1)



NW CORNER
SW 1/4
SEC. 20-46-32
CALCULATED POSITION
AT MID-POINT

ELEV. 980
100 YR FLOOD ELEV.
(SEE NOTE 6 ON PAGE 1)

APPROXIMATE
100 YEAR
FLOOD PLAIN
(SEE NOTE 6 ON PAGE 1)

NW CORNER
NE 1/4
SEC. 20-46-32
EXISTING COPPERFIELD
DNR DOC. 600-50814

CITY OF RAYMORE
PUBLIC PARK
BOOK 1657 / PAGE 109

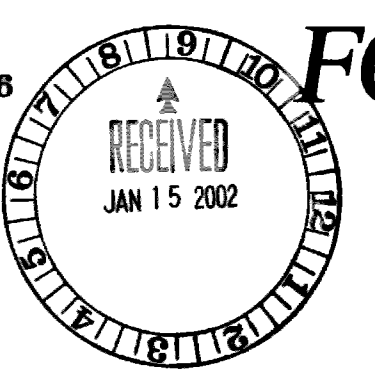
NE CORNER SE 1/4
SEC. 20-46-32
EXISTING 5/8" BAR WITH
ALUMINUM CAP STAMPED
BOWERS - BRENNER
AT POSITION OF OLD STONE
IN DNR DOC. 600-45909

SOUTH LINE NE 1/4 SEC. 20-46-32
ELEV. 980
(SEE NOTE 6 ON PAGE 1)

SE CORNER
NW 1/4
SEC. 20-46-32
NO MONUMENT

NOTE:
SEE SHEET 1 OF 2 FOR PROPERTY
DESCRIPTION, NOTES, DEDICATION AND
SURVEYOR'S CERTIFICATION.

PREPARED BY:
RK MACE ENGINEERING, INC.
ENGINEERS - SURVEYORS
1012 NE BRYANT COURT LEE'S SUMMIT, MISSOURI 64086
PHONE 816.525.8424 ~ FAX 816.525.8429



FINAL PLAT
**WOOD CREEK OF
THE GOOD RANCH**
FOURTH PLAT ~ LOTS 134 - 186
RAYMORE, CASS COUNTY, MISSOURI

ELEV. 973
100 YR FLOOD ELEV.
(SEE NOTE 6 ON PAGE 1)

